



INtime[®] for Windows[®] Licensing
Appendix 7
with USB/CID key
Procedure





Appendix 7 – USB/CID Distribution Host Key License installation

USB/CID Distribution Host Key License installation consists of installing a License String using the “Add license...” function in the license manager. Each USB/CID key has a unique corresponding License String. Steps below go through the procedure.

Identifying license components:

License String: *<ascii license string>[# “16” version “”, no expiration date, exclusive...]
 Located in the %INTIMECFG%\servrc file

Step by Step USB/CID Distribution Host Key license installation Example

Obtain the USB/CID Distribution Host Key License String. Provide the USB/CID key Serial Number to your Operations Manager and ask for the License String or License File.



Figure 7.1 – USB/CID distribution license keys

If a delegate user account Username and Password was provided by your Operations Manager, use the TenAsys License Portal to obtain the USB/CID Distribution Host Key License String.

Open a browser to <http://license.tenasys.com/login>, the *TenAsys License Portal*.

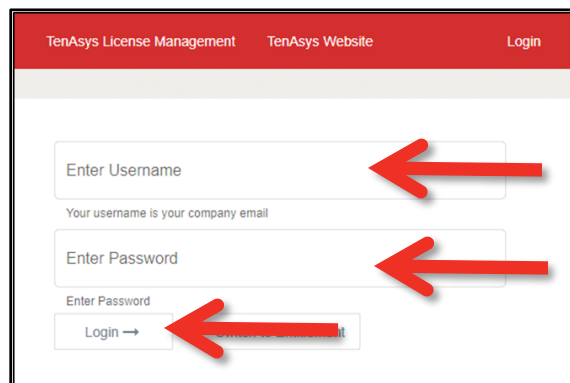


Figure 7.2 – TenAsys License Portal

Enter the Username and Password, then click on Login.

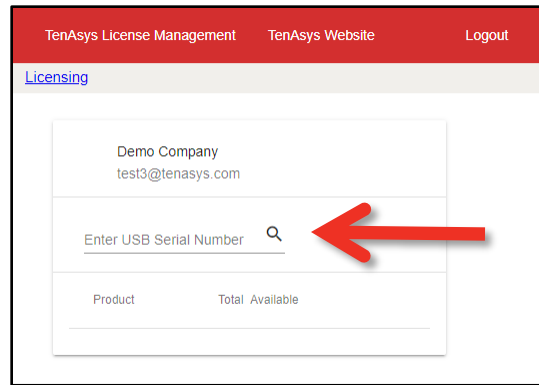


Figure 7.3 – USB/CID Serial Number entry

Enter the USB/CID Serial Number, then click on the search icon.

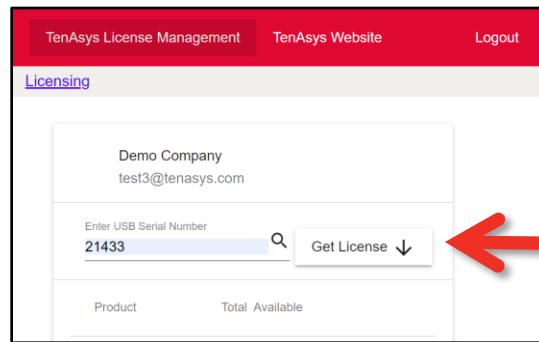


Figure 7.4 – Get License

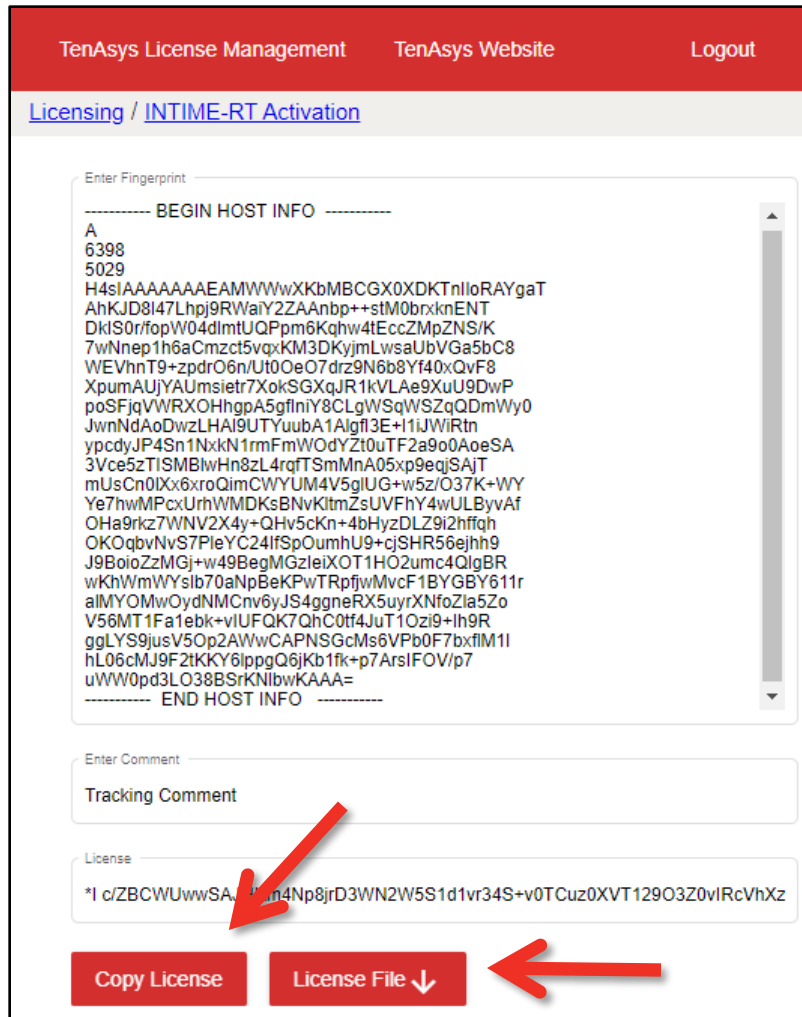


Figure 7.5 - Download or Copy License

Open the *INtime Configuration Panel*. The *INtime Configuration Panel* can be accessed either by selecting "INtime Configuration" from the *INtime Status Monitor* in the Windows System Notification Area, or by typing in "INtime" in the search bar of the Start Menu and selecting "INtime Configuration" from the list of applications listed.

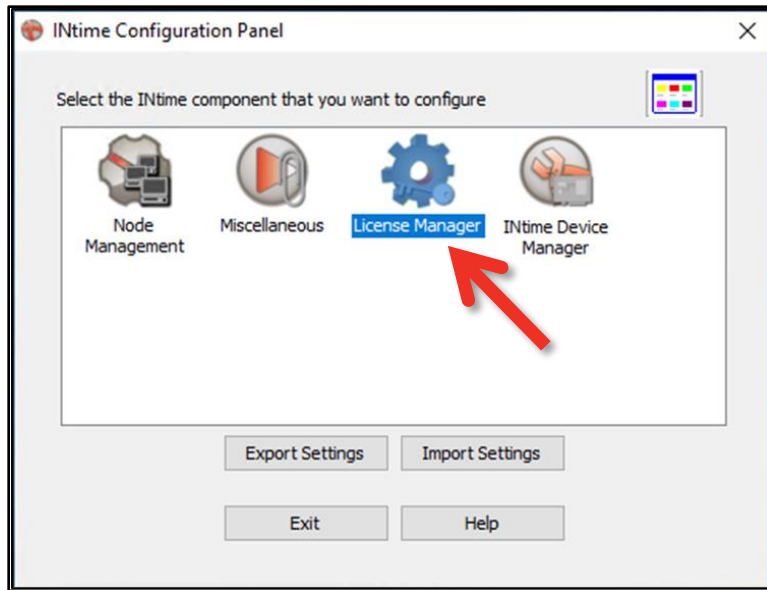


Figure 7.6 – INtime Configuration Panel

Launching the License Manager window

In the INtime Configuration panel, double-click the *License Manager* icon.

Confirm obtaining a license over the Internet

The INtime Configuration tool will prompt to obtain an INtime license over the internet. Click on “No”. If the distribution host is already licensed, this dialog will not appear. The *License Management* window will appear next.

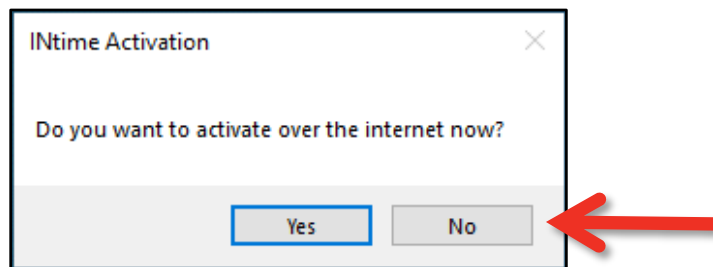


Figure 7.7 – Starting the internet license dialog



Figure 7.8 – License Management window

Use the “Enter String” or “Use License File” button.

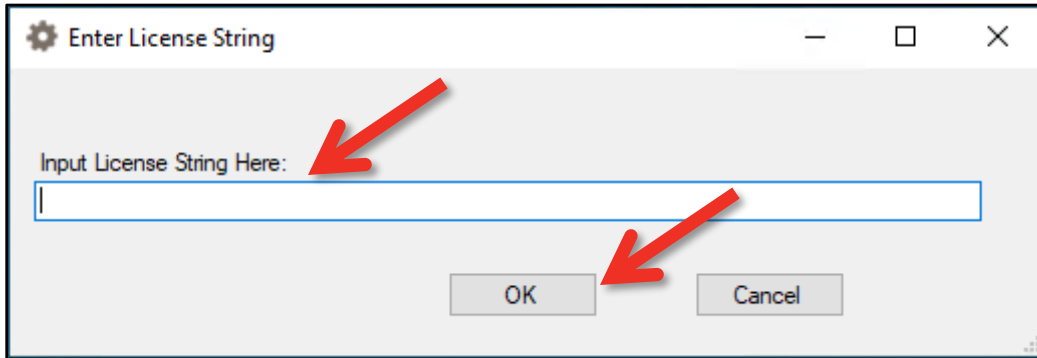


Figure 7.9 – Enter License String window

And paste the License String or select the License File corresponding to the USB/CID key. Click on the “OK” button. The *License Management* window shows the installed license.

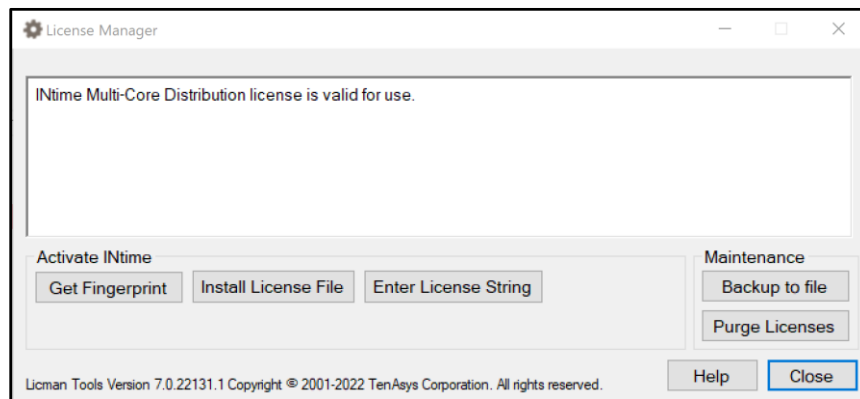


Figure 7.10 – License Management window with new license